



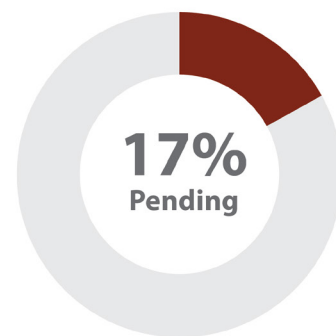
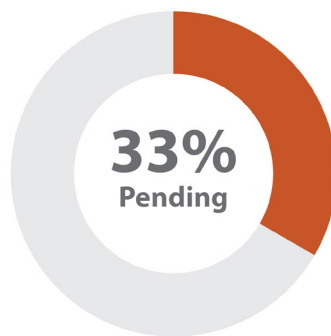
# Comprehensive Global Compliance Solution

# Compliance Portal

## Streamlined Compliance Management

A recent survey we carried out of compliance officers found too much time was spent on pulling information together from multiple sources.

Critical compliance data was spread around a variety of tools such as email, spreadsheets, databases, online tools and in some cases paper files.



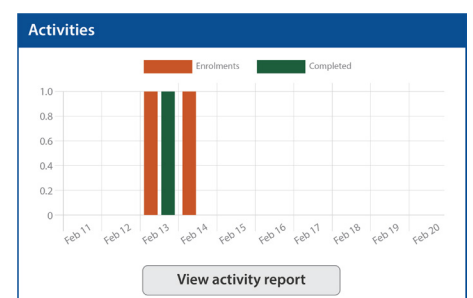
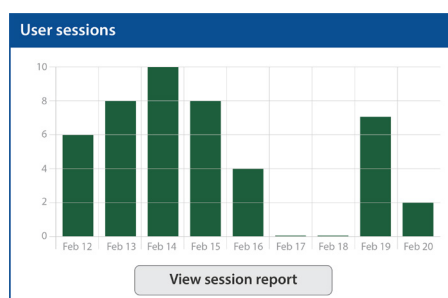
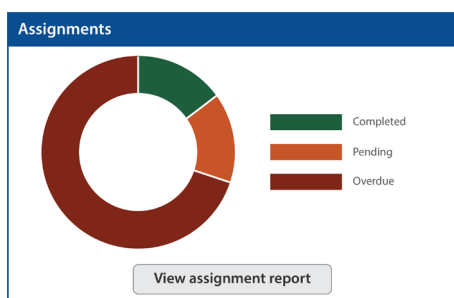
The Skillcast Portal digitises those processes, helps you identify risks and gives you an audit ready solution.

# Reporting

## Real-time Insight into Compliance Activities

The Skillcast Compliance Portal offers extensive reporting capabilities, giving a comprehensive overview of assignment details and generating real-time reports on:

- Policies
- Declarations
- Surveys
- Offline activities
- Events
- LMS
- CPD
- Tailored compliance pathways



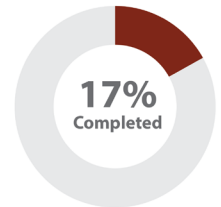
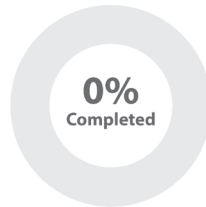
# User Experience and Pathways

## Seamless Assignment Management

Each tool can be integrated into personalised pathways. As a compliance function, you can shape the compliance journey and provide intuitive access to the full toolset.

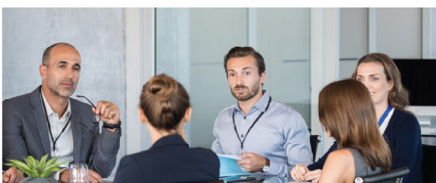
### My Assignment

Access your annual compliance training and other mandatory activities here



We support compliance from day one with induction pathways:

#### Day 1 - Let's Get Started!



#### Welcome to ApexPro

Our company's business systems and processes

1/1 



#### Respect in the workplace - ApexPro

Equality training and policies

4/4 



#### Line Manager Briefing

Record your check-in with your line manager

1/1 

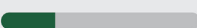
With full multi-lingual capability:



#### Mon parcours d'introsation

📅 17/03/2023

Mon parcours d'intégration vous donne toute la formation et l'orientation essentielles pour commencer à travailler dans notre organisations.

6/35 



#### Mon parcours AML

📅 23/03/2024

Ce programme vous prépare à lutter contre la criminalité financière au sein de notre entreprise.

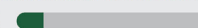
2/6 



#### Bibliothèque des politiques

📅 31/03/2024

Accédez ici à toutes nos politiques relatives à vos avantages, aux exigences légales et professionnelles et à la sécurité informatique.

2/21 

# Policy Management

## Manage, Deliver and Track Global Policies

You can create, update, approve, communicate and seek attestation for your corporate policies.

### Policy Library



#### Information Security

##### Acceptable IT Use Policy

31/03/2024

0/1

##### IT and Communications Systems Policy

31/03/2024

0/1

##### Social Media Policy

31/03/2024

0/1

#### Legal and Professional

##### Anti-Bribery and Corruption Policy

31/03/2024

0/1

##### Anti-Money Laundering Policy & Attestation

31/03/2024

0/1

You can manage the set up and sign-off process via integrated workflows.

# Declarations

## Collect, Track and Analyse Disclosures Easily

Do your employees need to complete disclosures or declarations for compliance with laws, regulations or internal standards? Our range of pre-built and customisable declarations helps you capture critical data.

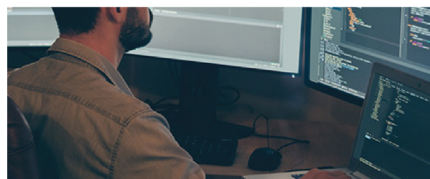
### Home > My Declarations



#### Conflicts of Interest

Declaration of your personal conflicts of interest. Must be completed annually.

0/1



#### DSE Self-assessment - Declaration

Self-assessment of your workstation to flag up any issues with your Display Screen Equipment.

0/1



#### Fit and Proper Questionnaire - FPQ- CP

Annual questionnaire of your fitness and propriety required for you certification.

0/1

# Compliance Registers

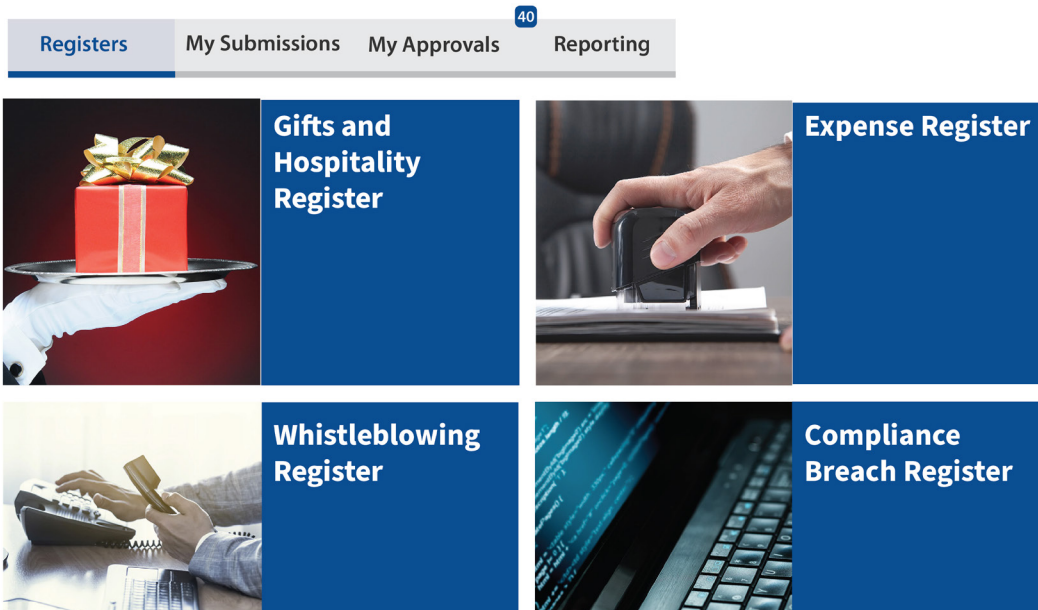
## Customise your Policies, Structure & Procedures

Bring together data on:

- Compliance Breaches
- Whistleblowing
- Gifts & Hospitality
- Expenses

With automated sign-off, workflow escalation and full audit trail.

### Registers



The screenshot shows a navigation bar with tabs: Registers, My Submissions, My Approvals, and Reporting (with a '40' notification badge). Below the navigation bar are four register cards, each with an image and a title:

- Gifts and Hospitality Register**: Image of a hand holding a red gift box with a gold ribbon.
- Expense Register**: Image of a hand holding a black stapler.
- Whistleblowing Register**: Image of hands holding a document over a desk with a telephone.
- Compliance Breach Register**: Image of a computer keyboard and a screen displaying code.

# Offline Reporting

## Set up and Assign Multiple CPD Schemes

Not all compliance processes happen online. You can record off-line activity and create structured CPD schemes.



### Line Manager Briefing

Record your check-in with your line manager

1/1

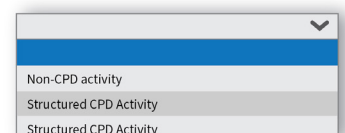
### My Activities



The screenshot shows a navigation bar with three tabs: Activity History, Add Additional Activity (highlighted), and CPD.

Category

Activity



A dropdown menu with a blue header and a downward arrow. The menu items are: Non-CPD activity, Structured CPD Activity, and Structured CPD Activity.

Add training record



# Surveys

## Automate & Customise Adaptive Questions

Understanding key risks, knowledge gaps, and overall awareness is a key element of compliance planning. Our anonymised surveys deliver robust, unbiased employee feedback.



### Integrity Survey

Our Company has a strong ethical culture which encourages me to do the right thing.

Disagree

Neither agree or disagree

Agree

Sometimes there are pressures to compromise ethical standards to meet business objectives.

Disagree

Neither agree or disagree




Agree

The Survey tool in the Skillcast Portal helps you to digitise staff surveys and easily and regularly monitor key topics, including diversity, inclusivity, cybersecurity and wellbeing.


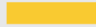



### Integrity Survey Results

Sometimes there are pressures to compromise ethical standards to meet business objectives.

Option	Responses	Percentage	
Disagree	192	63%	
Neither agree nor disagree	78	26%	
Agree	33	11%	

I know whom to approach to get advice when unsure whether an action is ethical

Option	Responses	Percentage	
Disagree	65	20%	
Neither agree nor disagree	25	8%	
Agree	229	72%	

# Integration

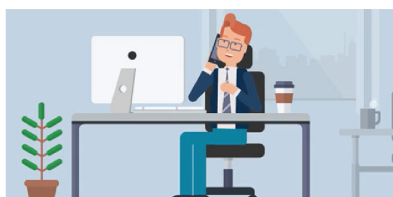
## Streamlined Compliance Management

Skillcast Compliance Portal can integrate with your existing systems, providing real-time data into your HR systems to bring together all compliance and learning activity.

# Learning Management System (LMS)

## Fully Featured and Customisable

The portal also offers a full enterprise Learning Management System (LMS). This functionality incorporates online courses and bite-sized videos, enriching the overall compliance and learning experience. It provides an integral tool for fostering continuous improvement and professional development within organisations.



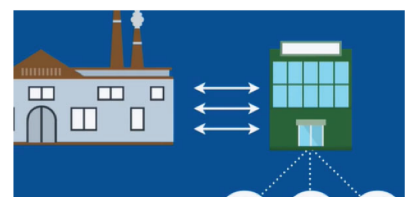
What is Insider Trading?

0/1



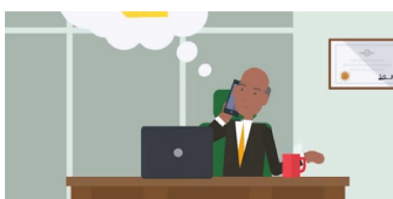
What is bribery?

0/1



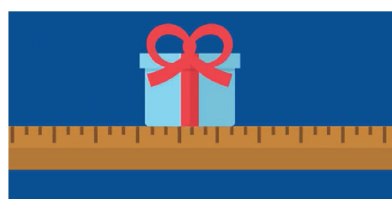
Horizontal Agreements

0/1



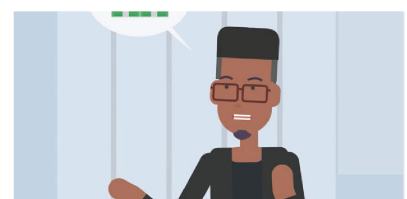
Vertical Agreements

0/1



Gifts and Hospitality

0/1



What is fraud?

0/1



**To book a demo**

Visit [skillcast.com/demo](https://skillcast.com/demo)

Or scan the QR code below

